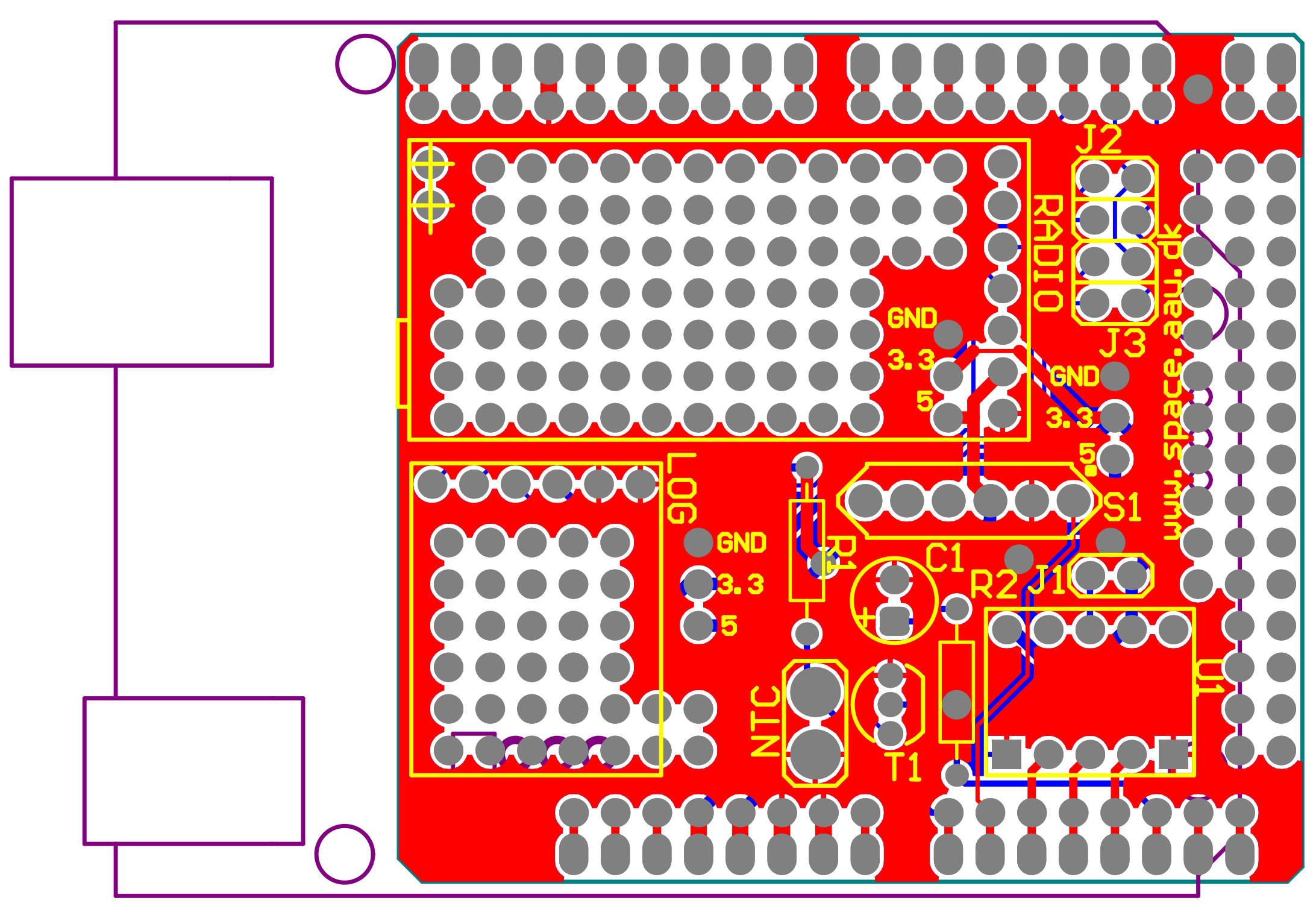


| Title | | |
|-------|---------------------------------------|-----------|
| Size | Number | Revision |
| A4 | | |
| Date: | 07-03-2012 | Sheet of |
| File: | Z:\Projects\...\schematic_ver4.SchDoc | Drawn By: |



| Comment | Description | Designator | Footprint | LibRef | Quantity |
|-------------------------------|--------------------------------|------------|--------------------------------|-------------------------------|----------|
| arduino shield_uno_rev3_+mega | extra holes mega compatibility | Arduino_ | ARDUINO UNO SHIELD + MEGA 2row | arduino shield_uno_rev3_+mega | 1 |
| Cap Pol2 | Polarized Capacitor (Axial) | C1 | CAP1uF | Cap Pol2 | 1 |
| SHIELD XTRA HOLES 6 | | H1 | mounting holes shield 6 | SHIELD XTRA HOLES 6 | 1 |
| SHIELD XTRA HOLES 10 | | H2 | mounting holes shield 10 | SHIELD XTRA HOLES 10 | 1 |
| SHIELD XTRA HOLES 8 | | H3, H4 | mounting holes shield 8 | SHIELD XTRA HOLES 8 | 2 |
| SHIELD XTRA HOLES 2 | | H5, H6 | mounting holes shield 2 | SHIELD XTRA HOLES 2 | 2 |
| Jumper | Jumper Wire | J1 | jumper | Jumper | 1 |
| SW2JUMPERS | | J2, J3 | SW2JUMPERS | SW2JUMPERS | 2 |
| OPENLOG | | LOG | OPENLOG AVR DOWNWARDS | OPENLOG | 1 |
| NTC | | NTC | NTC solder pads | NTC | 1 |
| Res2 | Resistor | R1, R2 | AXIAL-0.4 | Res2 | 2 |
| APC220 | | RADIO | ACP220 radio module | ACP220 | 1 |
| MPX4115 | | S1 | MPX4115 - Vertical | MPX4115 | 1 |
| lm35 | | T1 | transistor | lm35 | 1 |
| MMA7361L | | U1 | MMA7361L | MMA7361L | 1 |
| | | | | | |